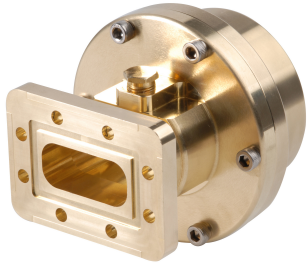


# WAVEGUIDE-CONNECTORS



Elliptical waveguide connectors

**Waveguide connectors** are tapered through multistep transitions that adjust their shape in stages from elliptical to the rectangular shape of industry-standard waveguide flanges. Each connector has a pressure inlet to allow the connection of pressurization equipment. Made of brass to provide long service life and compatibility with metals used in the waveguide itself.

Offered connector types:

- Fixed-tuned waveguide connectors
- Waveguide splices

## Product Classification

**Product Type** Elliptical waveguide connector

## General Specifications

**Attachment Method** Tab-flare | Tool-flare

**Body Style** Straight, fixed-tuned | Straight, non-tunable

**Inner Contact Plating** Unplated

**Interface** CPR112G | CPR137G | CPR159G | CPR187G | CPR229G | CPR90G | PBR100 | PBR120 | PBR140 | PBR149/U | UG-344/U | UG-39/U | UG-51/U | UG-541/U | UG-595/U | WR75 Cover

**Outer Contact Plating** Unplated

**Pressurizable** Yes

## Dimensions

**Waveguide Size** WR112|WG15|R84 | WR137|WG14|R70 | WR159|WG13|R58 | WR187|WG12|R48 | WR229|WG11|R40 | WR42|WG20|R220 | WR51|WG19|R180 | WR62|WG18|R140 | WR75|WG17|R120 | WR90|WG16|R100

## Electrical Specifications

**Insertion Loss, typical** 0.01 dB

**Operating Frequency Band** 10.2 – 11.7 GHz | 10.7 – 11.7 GHz | 11.7 – 13.25 GHz | 13.75 – 14.50 GHz | 14.0 – 15.35 GHz | 17.7 – 19.7 GHz | 21.2 – 23.6 GHz | 3.4 – 4.2 GHz | 4.4 – 5.0 GHz | 5.0 – 6.425 GHz | 5.6 – 6.425 GHz | 5.725 – 7.125 GHz | 5.925 – 7.125 GHz | 6.425 – 7.75

# WAVEGUIDE-CONNECTORS

---

GHz | 7.125 – 7.75 GHz | 7.125 – 8.5 GHz | 8.5 – 9.8 GHz

## Material Specifications

**Material Type** Brass

## Environmental Specifications

**Operating Temperature** -55 °C to +85 °C (-67 °F to +185 °F)

**Storage Temperature** -55 °C to +85 °C (-67 °F to +185 °F)

## \* Footnotes

**Insertion Loss, typical**  $0.05\sqrt{\text{freq (GHz)}}$  (not applicable for elliptical waveguide)