

# CMAX-EXT-43-153

---



Cell-Max™ Low PIM Directional Outdoor Antenna, 698–960 MHz and 1710–2700 MHz, 4.3-10

## Product Classification

|                      |                               |
|----------------------|-------------------------------|
| <b>Product Type</b>  | Over-the-head stadium antenna |
| <b>Product Brand</b> | Cell-Max™                     |

## General Specifications

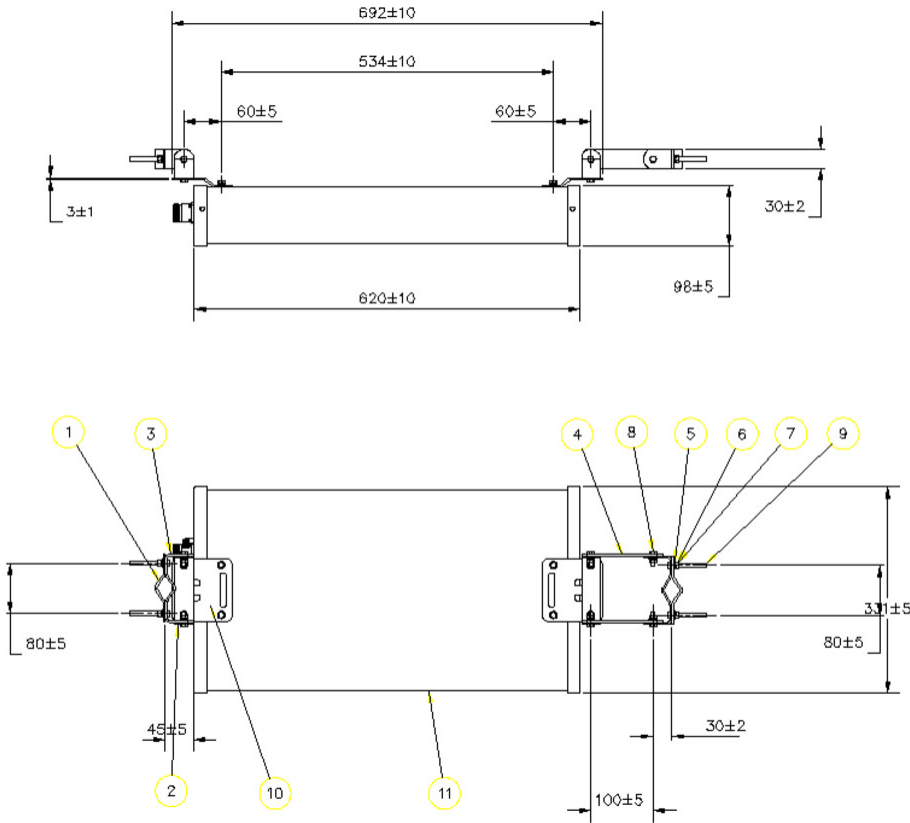
|                                     |   |
|-------------------------------------|---|
| <b>Application</b>                  | Indoor/Outdoor                              |
| <b>Antenna Type</b>                 | Directional                                 |
| <b>Antenna Array Characteristic</b> | SISO  |
| <b>Polarization</b>                 | Vertical                                    |
| <b>Color</b>                        | White (RAL 9016)                            |
| <b>Mounting</b>                     | Poles between 25–60 mm with supplied clamps |
| <b>Number of Ports</b>              | 1   |
| <b>Radome Material</b>              | PVC, UV resistant                           |
| <b>RF Connector Interface</b>       | 4.3-10 Female                               |

## Dimensions

|               |                    |
|---------------|--------------------|
| <b>Width</b>  | 331 mm   13.032 in |
| <b>Depth</b>  | 98 mm   3.858 in   |
| <b>Length</b> | 620 mm   24.409 in |

# CMAx-EXT-43-153

## Outline Drawing



## Electrical Specifications

|                                 |   |
|---------------------------------|---|
| <b>Impedance</b>                | 50 ohm                                  |
| <b>Lightning Protection</b>     | dc Ground                               |
| <b>Operating Frequency Band</b> | 1710 – 2700 MHz   698 – 960 MHz         |
| <b>Electrical Note</b>          | Values typical, unless otherwise stated |

## Electrical Specifications

| Frequency Band, MHz                    | 698–800  | 800–960  | 1710–2200 | 2200–2700 |
|--|----------|----------|-----------|-----------|
| <b>Gain, dBi</b>                       | 10       | 11       | 11        | 11        |
| <b>Beamwidth, Horizontal, degrees</b>  | 68       | 60       | 60        | 52        |
| <b>Beamwidth, Vertical, degrees</b>    | 30       | 28       | 30        | 30        |
| <b>Front-to-Back Ratio at 180°, dB</b> | 18       | 18       | 20        | 20        |
| <b>VSWR   Return loss, dB</b>          | 1.8 10.9 | 1.8 10.9 | 1.8 10.9  | 1.8 10.9  |
| <b>PIM, 3rd Order, 2 x 20 W, dBc</b>   | -153     | -153     | -153      | -153      |

# CMAX-EXT-43-153

---

|   |     |     |     |     |
|---|-----|-----|-----|-----|
| <b>Input Power per Port, maximum, watts</b> | 100 | 100 | 100 | 100 |
|---|-----|-----|-----|-----|

## Mechanical Specifications

**Wind Loading @ Velocity, maximum** 686.0 N @ 216 km/h (154.2 lbf @ 216 km/h)

**Wind Speed, maximum** 216 km/h (134 mph)

## Environmental Specifications

**Operating Temperature** -40 °C to +60 °C (-40 °F to +140 °F)

**Relative Humidity** Up to 100%

**Ingress Protection Test Method** IEC 60529:2001, IP65

## Packaging and Weights

**Width, packed** 350 mm | 13.78 in

**Depth, packed** 160 mm | 6.299 in

**Length, packed** 830 mm | 32.677 in

**Packaging quantity** 1

**Weight, gross** 7.4 kg | 16.314 lb

**Weight, net** 4.7 kg | 10.362 lb

## Regulatory Compliance/Certifications

| <b>Agency</b> | <b>Classification</b>  |
|---------------|--|
| CHINA-ROHS    | Below maximum concentration value  |
| ISO 9001:2015 | Designed, manufactured and/or distributed under this quality management system   |
| REACH-SVHC    | Compliant as per SVHC revision on <a href="http://www.commscope.com/ProductCompliance">www.commscope.com/ProductCompliance</a> |
| ROHS          | Compliant  |
| UK-ROHS       | Compliant  |

